

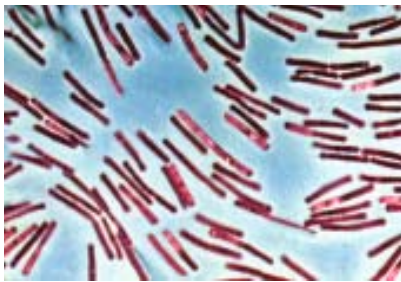
This key is a beta guide to source pictures distributed by the Seacoast Center for Education Montessori Program. We acquire these pictures from the publisher in bulk, reorganize, and share them as a resources for our students. It is most assuredly a work in progress. Due to copyright issues we ask you to refrain from distributing this material or scanning the originals. It is our intention to continue to refine these sets and eventually to make them available as a curriculum product.



staphylococcus  
(monera)

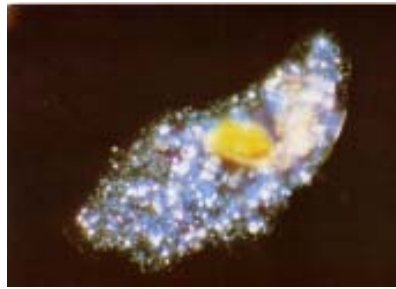


coccus

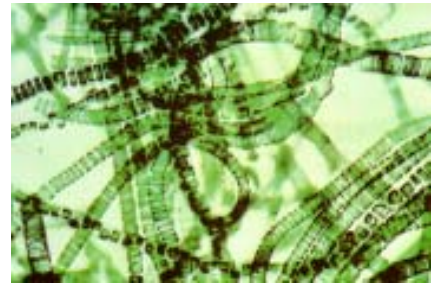


bacillus

Kingdom Protista



amoeba



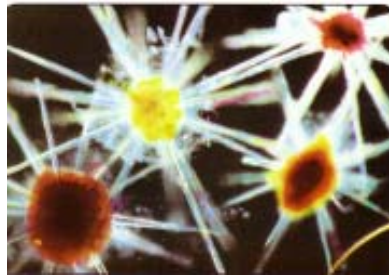
ulotrix  
(green algae)



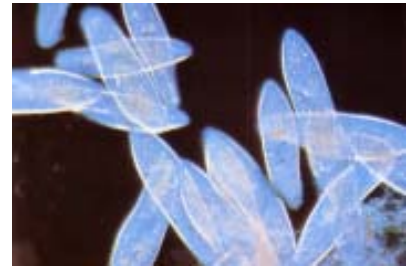
blue-green algae



lichen



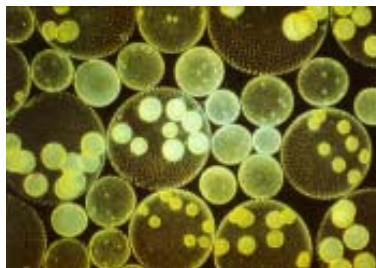
radiolaria



paramecium



spirogyra



volvox



diatoms



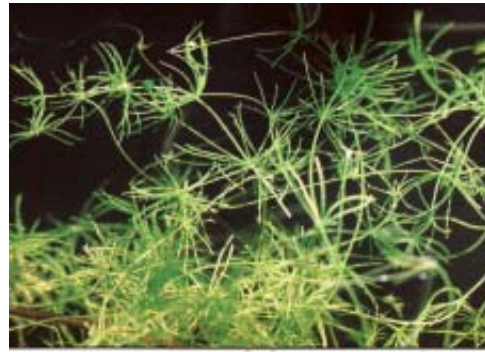
brown alga



euglena



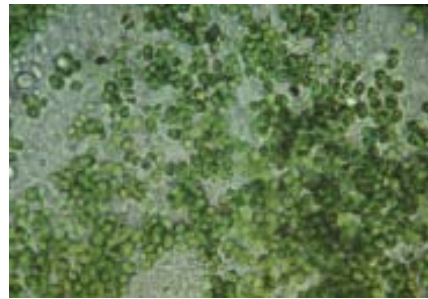
dinoflagellates (ceratium)



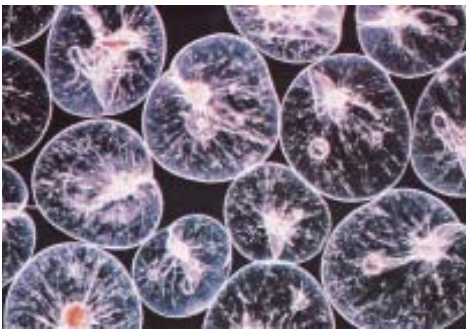
chara (muskgrass)



enteromorpha (algae)



green algae



nocticula



Stentor (protista)



slime mold

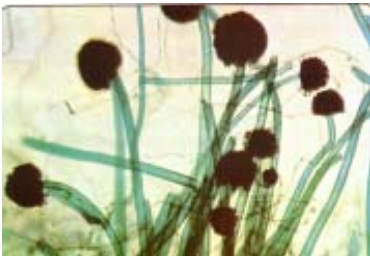
Slime mold was once considered an animal, then reclassified as a fungus, and now many biologists considered it a Protoctista (or Protist).



amanita



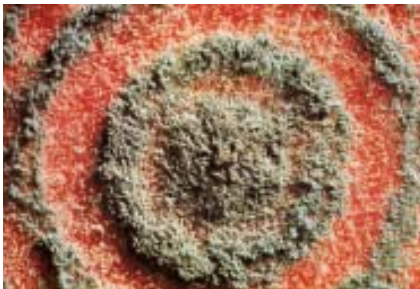
polyporus



aspergillus



Lepiota



penicillium



jelly ear fungus



bracket fungus



cassava



bromeliad



tabebuia

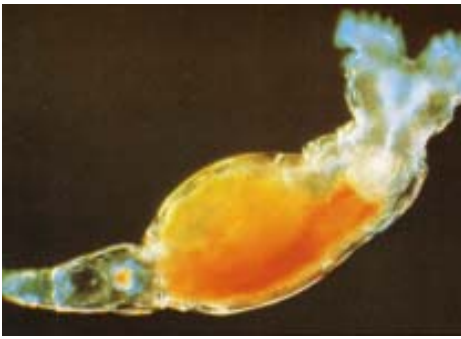


canna or indian shot  
(monocotyledon)



caladium

Kingdom Plantae      add to Plant Classification for First Knowledge of Plants



rotifera



sea pen  
(cnidaria)



liver fluke  
(platyhelminthes)



feather star  
(echinodermata)



crown-of-thorns  
(echinodermata)

These are assorted invertebrates. Add to the invertebrates from the Animal Classification pictures to make a vertebrate/invertebrate set. Then add the sting ray and sharks at another time and switch labels to introduce the idea of Chordate and Non-Chordate.



soft coral  
(cnidaria)



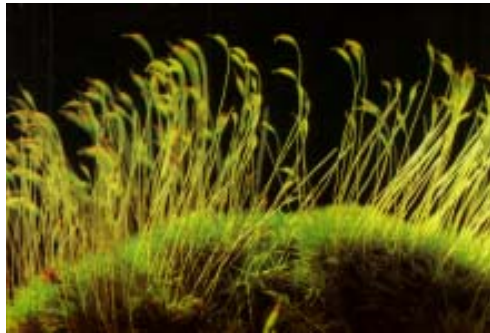
sea urchin  
(echinodermata)



lycopodium



lotus



moss



selaginella



thujus orientalis  
(conifer)



cycad (gymnosperm)



liverwort



verbena  
(dicotyledon)



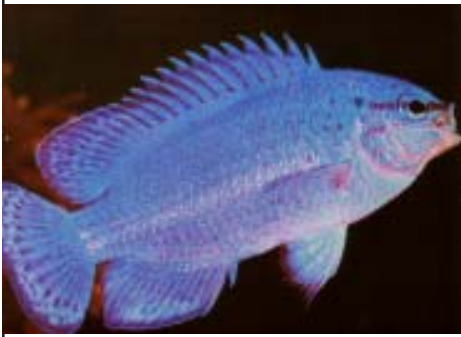
bamboo  
(monocotyledon)



sting ray  
(chordata)



shark  
(chondrichthyes)



blue wrasse  
(osteichthyes)



frog  
(amphibia)



marine iguana  
(reptilia)



frigate bird  
(aves)



rat  
(mammalia)

The classes of animals may be used to expand the Animal Classification Chart.

Classification Chart  
Kingdom Animalia



sea scallop  
(mollusca)



Sponge  
(porifera)

There is no reason why one arthropod, echinoderm, or mammal is better than another in making taxonomic classification material-- use extras to keep the first knowledge set fresh or to add to the invertebrates. Remember that it is **impossible** to chase taxonomy and that these materials are general keys leading children to their own real work.



bedbug  
(arthropoda)



comb jelly  
(cnidaria)



louse  
(arthropoda)



giraffe  
(mammalia)



tapeworm  
(platyhelminthes)



leech  
(annelida)



pinworm  
(nematoda)



flea  
(arthropoda)



butterfly  
(arthropoda)



cockroach  
(arthropoda)



locust  
(arthropoda)



crown-of-thorns  
(echinodermata)